

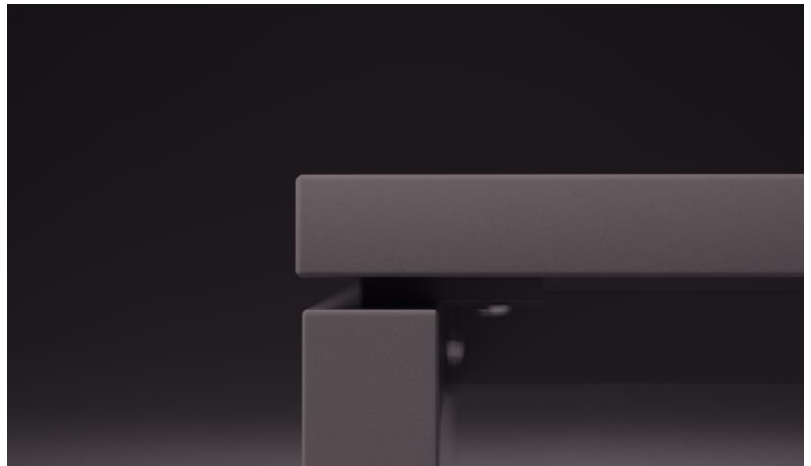
Mod 16



Mod 16 is an office desk designed to be the optimal workstation thanks to its strong and strain resistant structure. The base of the desk is made of welded steel profiles with a cross-section of 40mm and is powder coated with textured powder finish - RAL standard. The worktop is 25mm thick with different types of surfaces: melamine UniDecor, melamine Wood, Linoleum, plywood and others.

The desk can be equipped with various accessories such as acoustic dividers, desktop lighting and a wide range of power & data power modules.

The mod 16 desk system is designed to suffice every need of a modern working office environment. The mod 16 desks and workstations allow any combination of not only different power and data modules but it also allows for different desk pedestals, file cabinets and more. The cable management system of mod 16 keeps all data and power cables stacked and arranged, firmly housed in the vertical steel net.



The power supply of the work devices on the worktop is done through various sockets 220 V, RJ 45 data, HDMI, VGA or USB 5V power supply. The power and data sockets can be installed in different open and closed modules,

as well as directly on the worktop.



The combination of comfort and functionality, fused with the industrial straight line design, results in a superb workstation, providing the optimal work conditions for anyone.